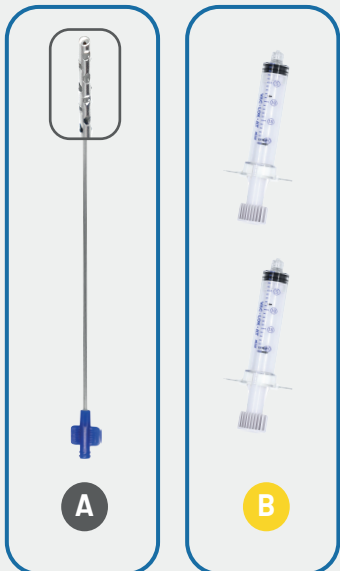


QUICK REFERENCE GUIDE PACK COMPONENTS

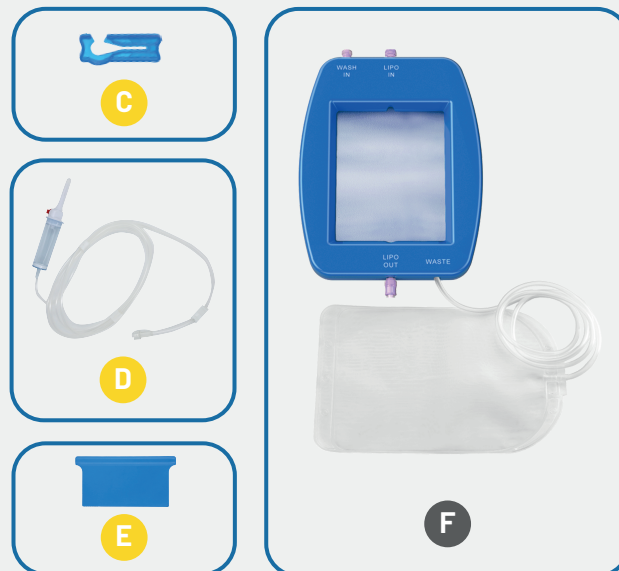
FAT INFILTRATION & HARVESTING

- A** CANNULA 3mm x 250mm
- B** SYRINGE VacLok 20ml X2



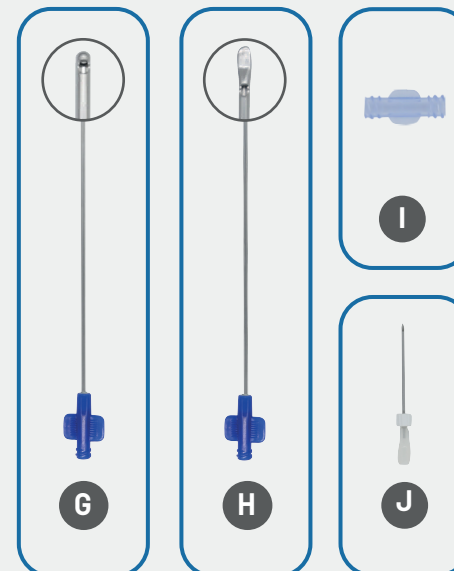
FAT PROCESSING

- C** CLAMP
- D** INFUSION LINE
- E** SPATULA
- F** FAT DIALYSING STATION



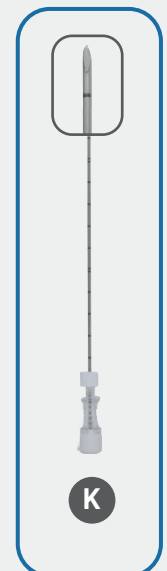
FAT INJECTION

- G** CANNULA
ROUND TIP • 2,1mm x 150mm
- H** CANNULA
SPATULATED TIP • 2,1mm x 150mm
- I** CONNECTOR FLL-FLL
- J** NEEDLE 16G x 90mm



TISSUE EXPANSION

- K** NEEDLE
WITH STYLET 16G x 150mm

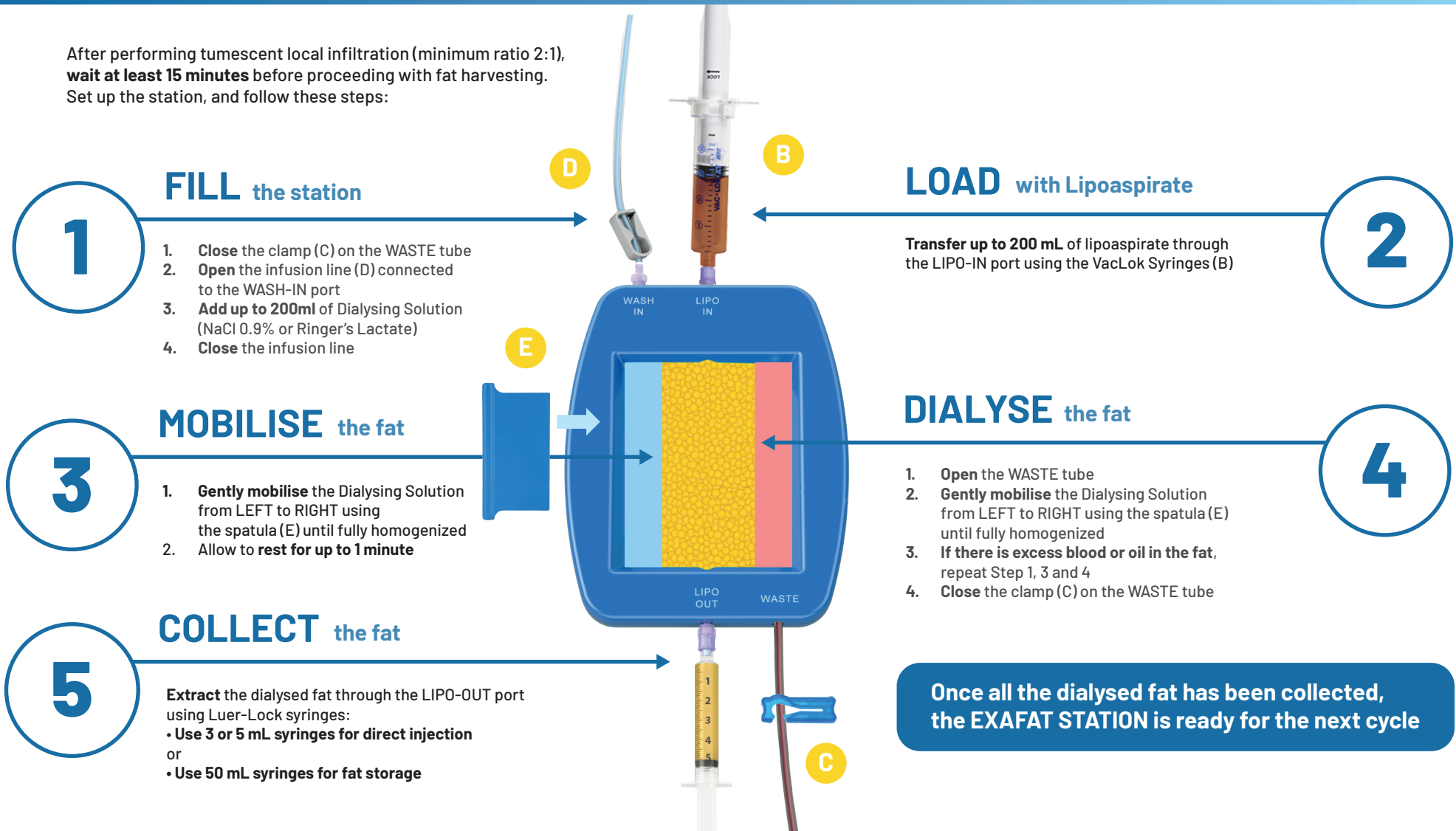


QUICK REFERENCE GUIDE

FAT DIALYSING STATION / 5 STEPS

exaFAT
FAT DIALYSING SYSTEM

After performing tumescent local infiltration (minimum ratio 2:1),
wait at least 15 minutes before proceeding with fat harvesting.
Set up the station, and follow these steps:



! IMPORTANT: This Quick Reference Guide does not replace in any way the Instructions For Use (IFU) of each component

REFERENCE: EXAFAT-04